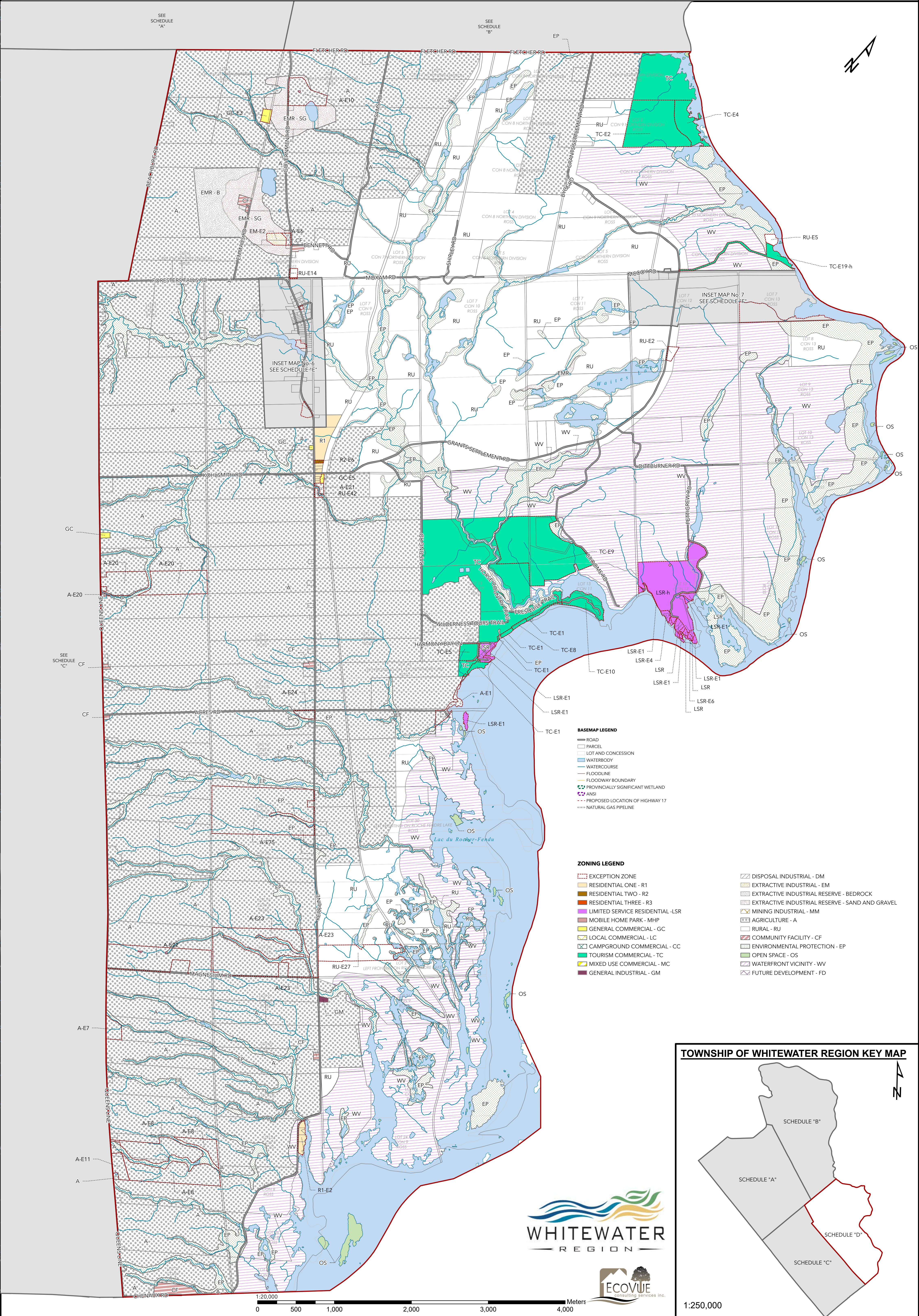


THE TOWNSHIP OF WHITEWATER REGION ZONING BY-LAW

SCHEDULE "D" - EAST HALF OF ROSS

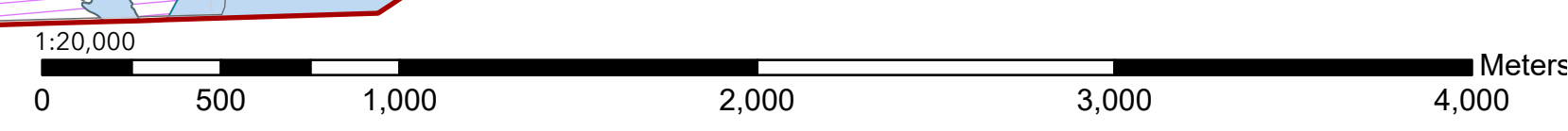
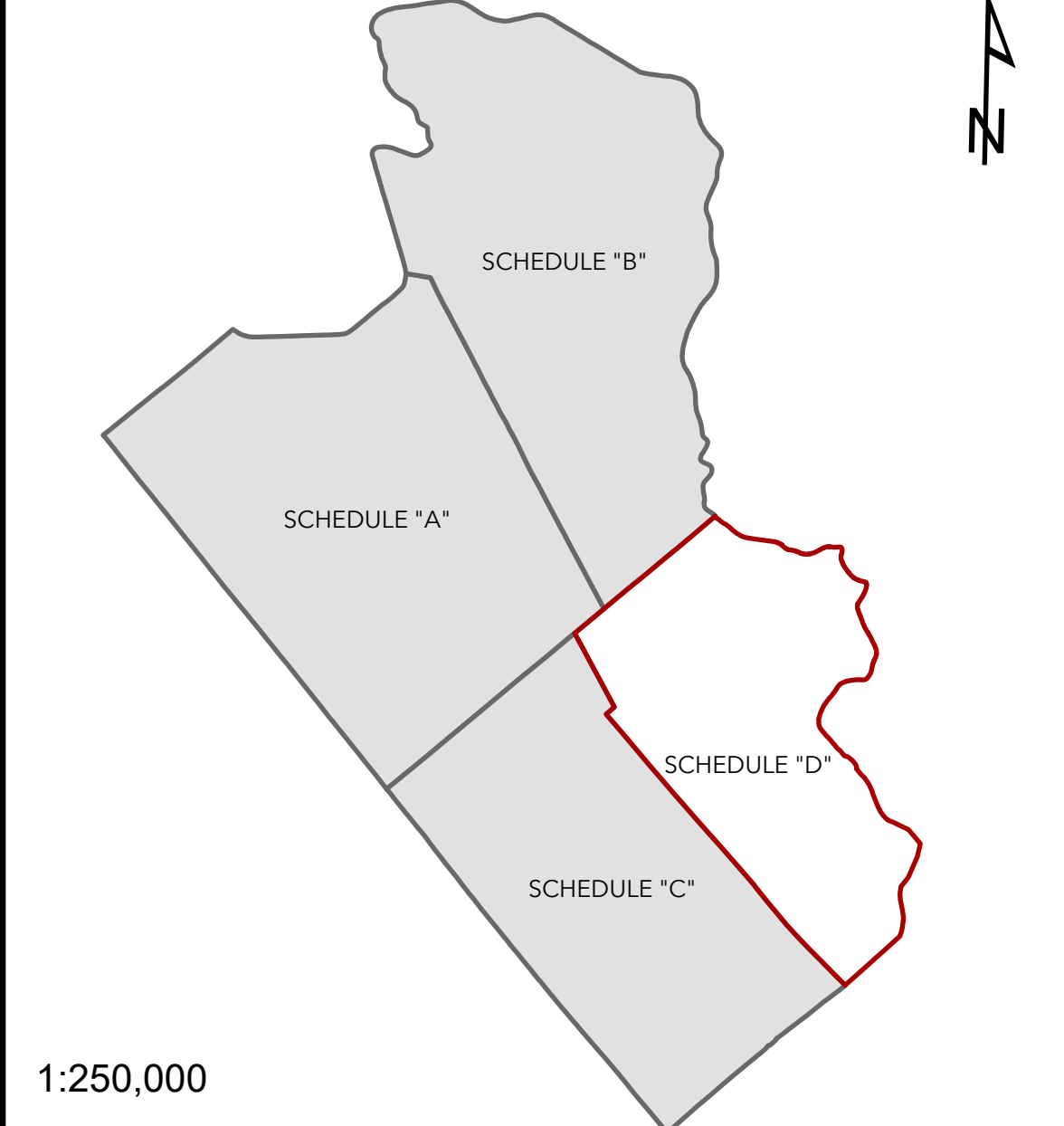
Date Exported: 2024-01-16



- BASEMAP LEGEND**
- ROAD
 - PARCEL
 - LOT AND CONCESSION
 - WATERBODY
 - WATERCOURSE
 - FLOODLINE
 - FLOODWAY BOUNDARY
 - PROVINCIALY SIGNIFICANT WETLAND
 - ANSI
 - PROPOSED LOCATION OF HIGHWAY 17
 - NATURAL GAS PIPELINE

- ZONING LEGEND**
- EXCEPTION ZONE
 - RESIDENTIAL ONE - R1
 - RESIDENTIAL TWO - R2
 - RESIDENTIAL THREE - R3
 - LIMITED SERVICE RESIDENTIAL - LSR
 - MOBILE HOME PARK - MHP
 - GENERAL COMMERCIAL - GC
 - LOCAL COMMERCIAL - LC
 - CAMPGROUND COMMERCIAL - CC
 - TOURISM COMMERCIAL - TC
 - MIXED USE COMMERCIAL - MC
 - GENERAL INDUSTRIAL - GM
 - DISPOSAL INDUSTRIAL - DM
 - EXTRACTIVE INDUSTRIAL - EM
 - EXTRACTIVE INDUSTRIAL RESERVE - BEDROCK
 - EXTRACTIVE INDUSTRIAL RESERVE - SAND AND GRAVEL
 - MINING INDUSTRIAL - MM
 - AGRICULTURE - A
 - RURAL - RU
 - COMMUNITY FACILITY - CF
 - ENVIRONMENTAL PROTECTION - EP
 - OPEN SPACE - OS
 - WATERFRONT VICINITY - WV
 - FUTURE DEVELOPMENT - FD

TOWNSHIP OF WHITEWATER REGION KEY MAP



1:250,000