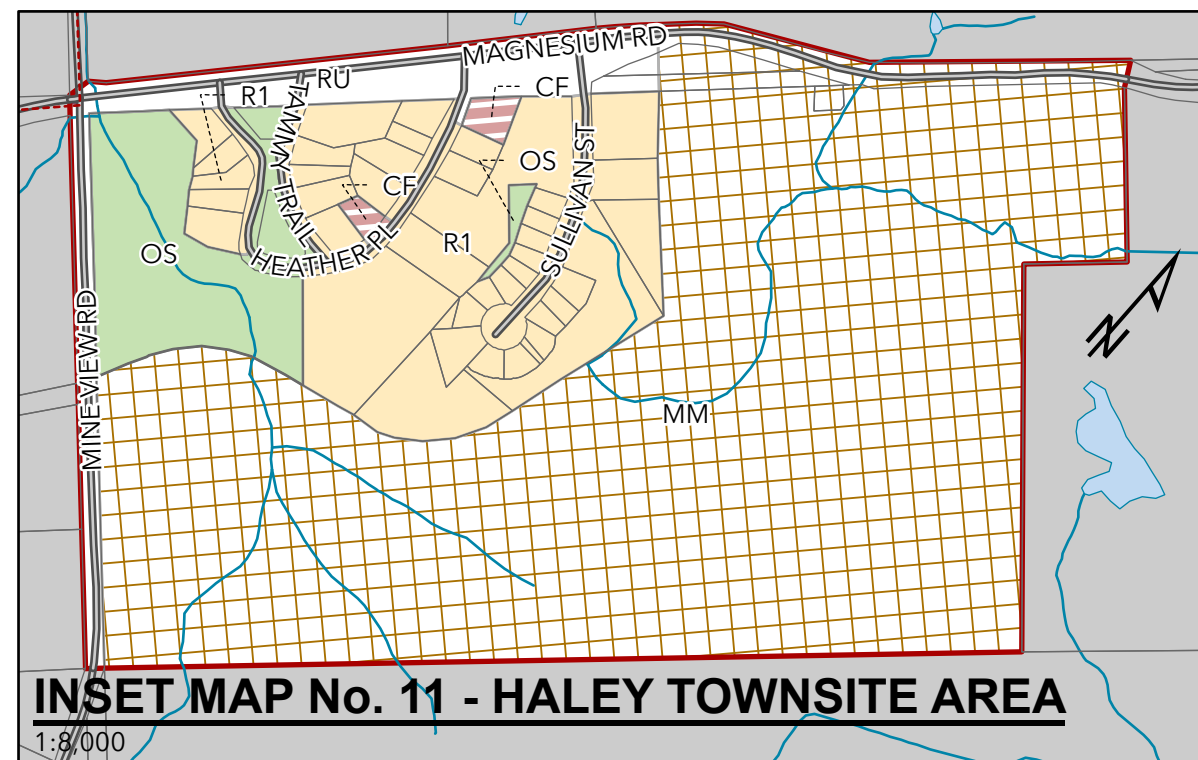
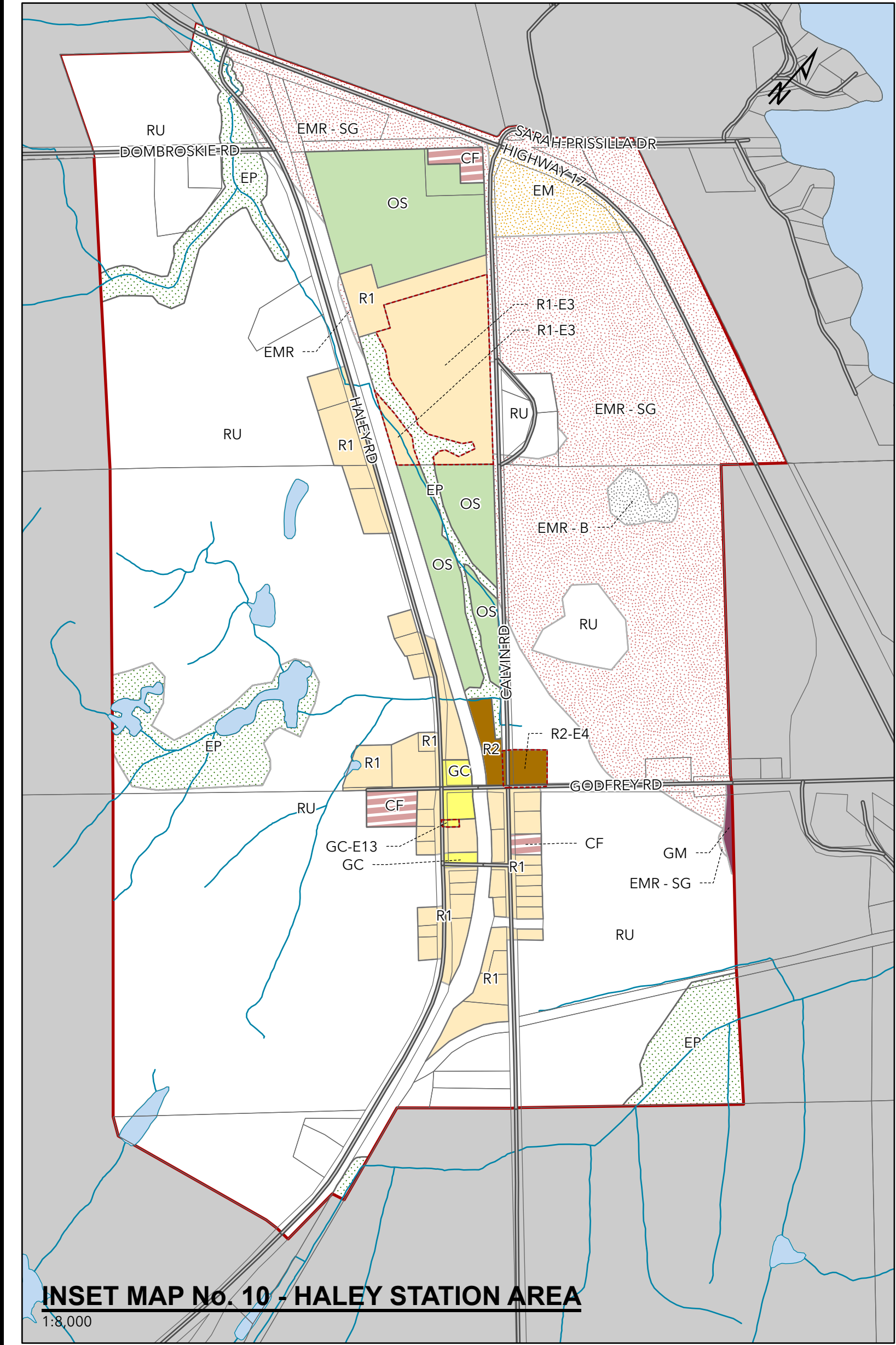
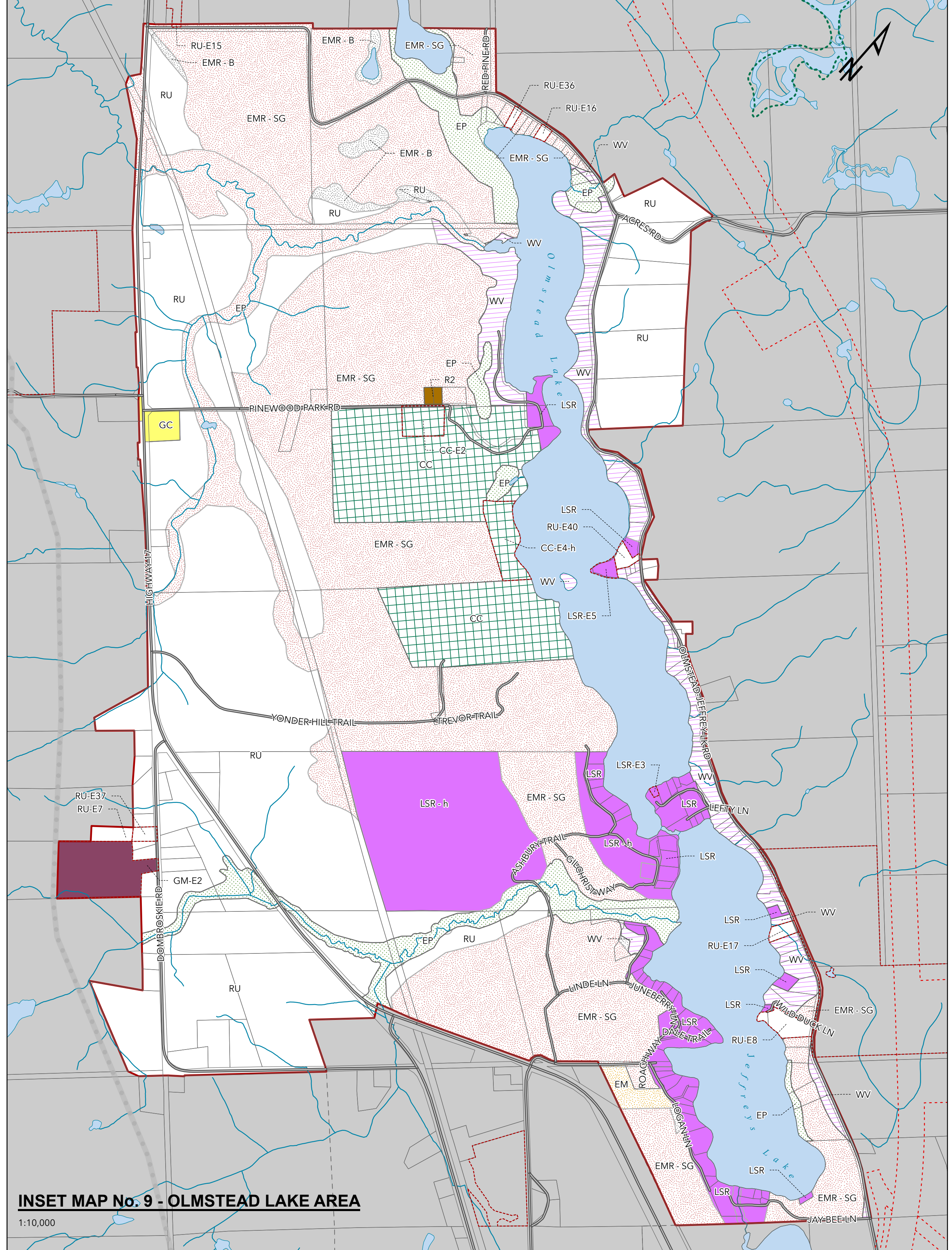
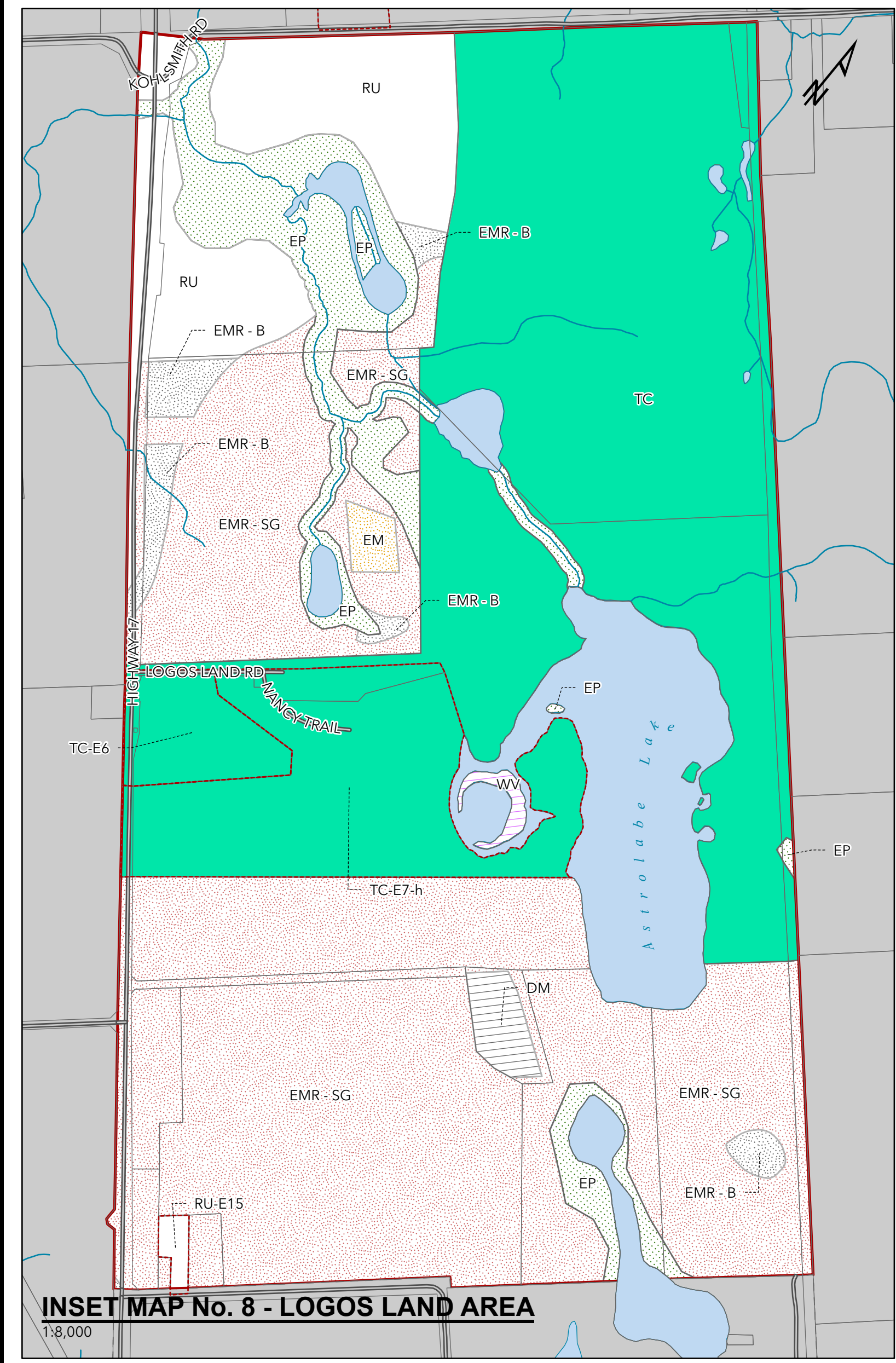
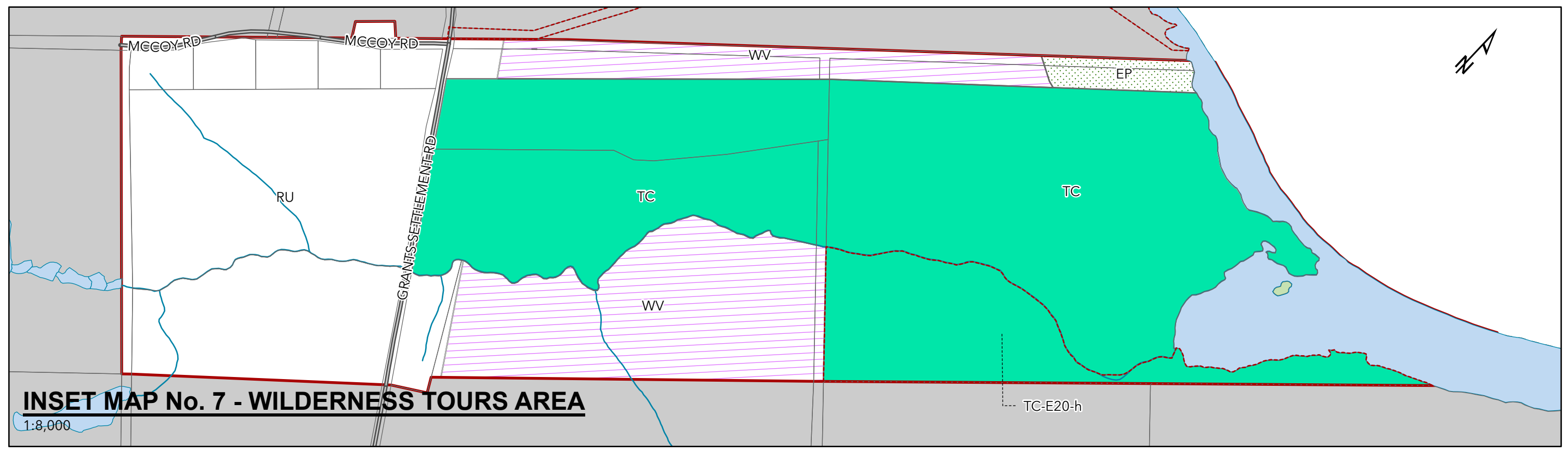
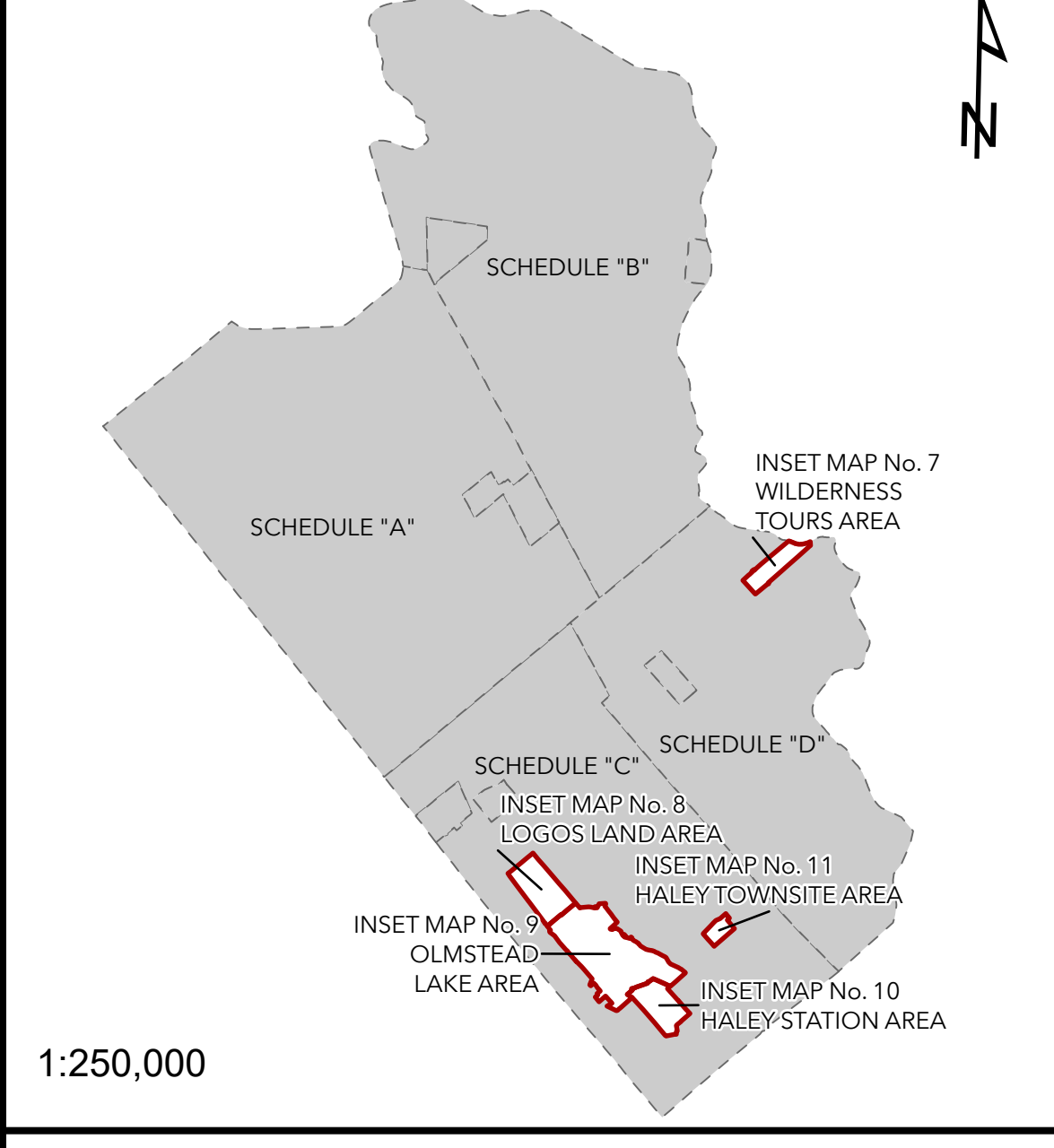


THE TOWNSHIP OF WHITEWATER REGION ZONING BY-LAW

SCHEDULE "F" - INSET MAPS 7-11

Date Exported: 2024-01-16

TOWNSHIP OF WHITEWATER REGION KEY MAP



- | | |
|--|---|
| <p>BASEMAP LEGEND</p> <ul style="list-style-type: none"> ROAD PARCEL WATERBODY WATERCOURSE FLOODLINE FLOODWAY BOUNDARY ANSI PROVINCIAL SIGNIFICANT WETLAND PROPOSED LOCATION OF HIGHWAY 17 EXCEPTION ZONE NATURAL GAS PIPELINE | <p>ZONING LEGEND</p> <ul style="list-style-type: none"> EXCEPTION ZONE RESIDENTIAL ONE - R1 RESIDENTIAL TWO - R2 RESIDENTIAL THREE - R3 LIMITED SERVICE RESIDENTIAL - LSR MOBILE HOME PARK - MHP GENERAL COMMERCIAL - GC LOCAL COMMERCIAL - LC CAMPGROUND COMMERCIAL - CC TOURISM COMMERCIAL - TC MIXED USE COMMERCIAL - MC GENERAL INDUSTRIAL - GM DISPOSAL INDUSTRIAL - DM EXTRACTIVE INDUSTRIAL - EM EXTRACTIVE INDUSTRIAL RESERVE - BEDROCK EXTRACTIVE INDUSTRIAL RESERVE - SAND AND GRAVEL MINING INDUSTRIAL - MM AGRICULTURE - A RURAL - RU COMMUNITY FACILITY - CF ENVIRONMENTAL PROTECTION - EP OPEN SPACE - OS WATERFRONT VICINITY - WV FUTURE DEVELOPMENT - FD |
|--|---|

